



Attaching the LoftyFiber Raddle on the Ashford Table Loom

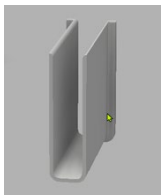


To attach your raddle, first assemble the raddle sections by pushing firmly at the joins.

Note that the short and tall clips have one side with a wider opening; that's the side that is reserved for the raddle. Place the narrow side down on the castle, using the short clips above the shaft toggles and the tall clips on the sides.

Rest the raddle lightly inside the clips as shown, then rotate slightly back and press down on the raddle to secure it in the clips.

The raddle covers can slide or snap on to protect already sleyed threads as well as to make a flat place for your warp chains to rest.



Raddle Sleeves are included for use with very fine threads (such as 30/2 linen or 20/2 cotton). Very fine threads can sometimes be trapped in the joins of the raddle sections. The sleeves can be left in place when weaving with larger yarns, but should be removed before disassembling the raddle.

