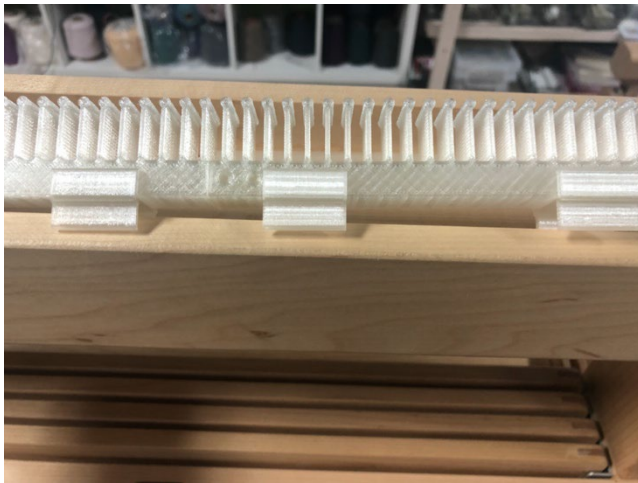




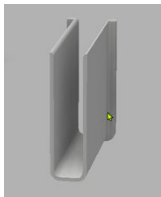
Attaching the LoftyFiber Raddle on the Schacht High Castle



To attach your raddle, first assemble the raddle sections by pushing firmly at the joins. Next place about 2 clips on each 6-inch section.

Holding the assembled raddle at an angle as shown in the picture above, rotate the raddle over the High Castle and snap into place.

The raddle covers can slide or snap on to protect already sleyed threads as well as to make a flat place for your warp chains to rest.



Raddle Sleeves are included for use with very fine threads (such as 30/2 linen or 20/2 cotton). Very fine threads can sometimes be trapped in the joins of the raddle sections. The sleeves can be left in place when weaving with larger yarns but should be removed before disassembling the raddle.

