



## Attaching the LoftyFiber Raddle on the Louet Built-In Raddle

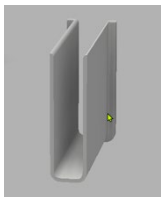


To attach your raddle, first assemble the raddle sections by pushing firmly at the joins. Next place about 2 clips on each 6-inch section.

Holding the assembled raddle at an angle as shown in the picture above, rotate the raddle over the Louet built-in raddle and snap into place.

The raddle covers can slide or snap on to protect already sleyed threads as well as to make a flat place for your warp chains to rest.

Another method of attaching the raddle, that may be easier for longer raddles, is to first attach the clips to the Louet built-in raddle, then press the preassembled raddle sections into the clips. Similarly, to remove the raddle, lift the assembled raddle out of the clips, then remove the clips individually.



Raddle Sleeves are included for use with fine threads to avoid them being snagged in to the joins of the raddle sections. The sleeves can be left in place when weaving with larger yarns but should be removed before disassembling the raddle.

