



## LoftyFiber Raddles

LoftyFiber raddles are used for back to front warping and are normally attached to the castle or top of the loom. The raddle sections are available in 6, 4 and 2.5 inch lengths and are pressed together to achieve the desired length. Each raddle section has four spaces per inch; 1-inch spaces can be custom ordered for weavers who prefer to wind a second raddle cross in 1-inch sections.

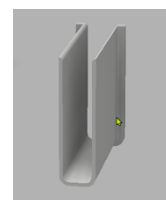
Connect the raddle sections by pressing firmly; put pressure on the joint to make them fit flush. To disconnect the raddle pieces, pull or push straight down without twisting to avoid damage.

Caps are available to place on top of the raddle to provide a smooth surface to rest the warp chains and keep warp ends already spread safely in place.

Clips are available for Ashford, Louet, Schacht, Harrisville, and some Macomber and Leclerc looms that allow the raddle to held on the castle tray, shaft or Louet built-in raddle. For looms where no clip is available, a pair of short, flat end pieces can be attached to each end of the assembled raddle for a flat surface to use a small clamp (clamp not included).

When using clips to attach the raddle, first assemble the raddle and place clips about every 6-inches before pressing into place on the loom.

When weaving with very fine threads (such as 16/2 cotton or 30/2 linen), it is recommended that a Raddle Sleeve be inserted over the joins to avoid the fine thread snagging in the gap in the join (see Figure 1). When using a sleeve over the join, press it out before disassembling the raddle.



*Figure 1: Raddle Sleeve to cover joins*

